

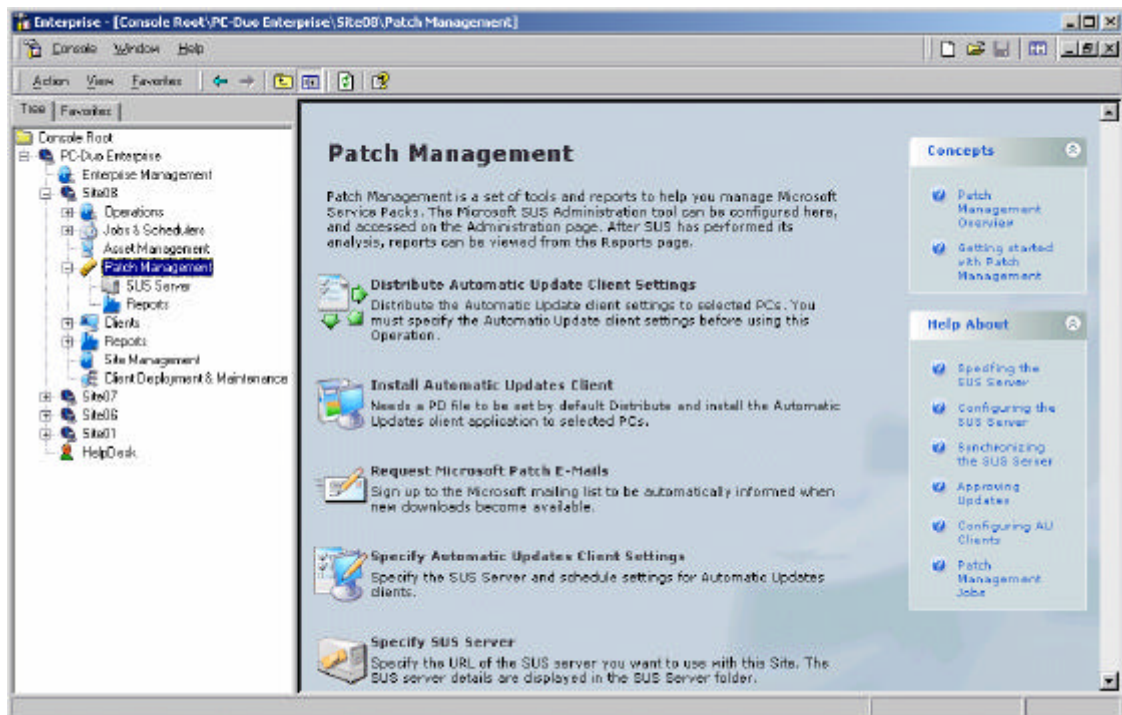


## What's New in PC-Duo Enterprise v2.3

### Patch Management

Accelerating business use of the Internet together with increasingly sophisticated viruses and attacks on business networks has required Microsoft to address security issues by releasing an ever-growing number of software patches. While these fixes provide a reliable antidote, they mean that organizations must spend more of their scarce resources in checking updates and making sure that they are installed.

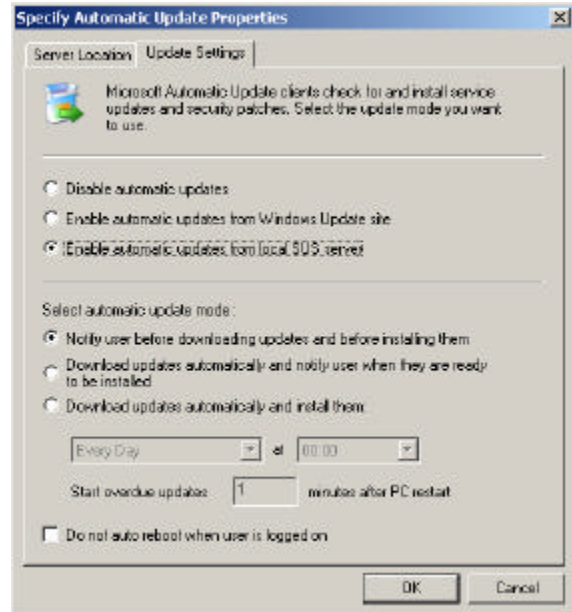
Vector Network's Patch Management module enables organizations to automate the installation of critical updates and service releases. Based on Microsoft's Software Update Services application, it provides a flexible, simple to implement solution to maintaining the security and integrity of organizations' systems.



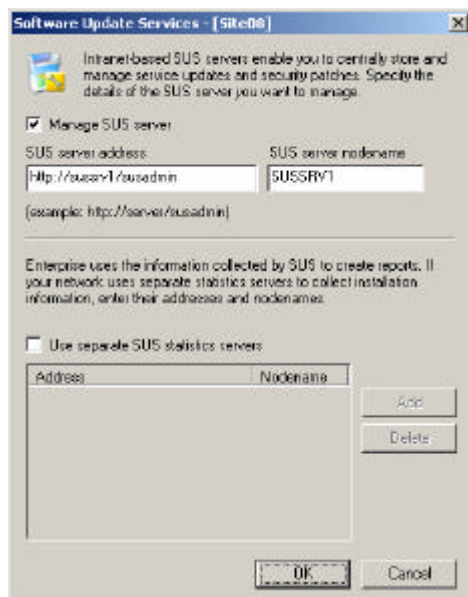
## Automatic Updates without Active Directory

Microsoft's Automatic Updates Client application is responsible for installing patches on PCs. Before automating the installation of software updates, you must specify the location of the patches you want it to install, and schedule when you want the updates to take place. Vector's proven software distribution technology enables you to configure Automatic Updates Clients without the need to use Active Directory.

The Automatic Updates Client application is installed as part of Windows 2003 or as part of a Service Release for Windows 2000 and XP. However, if you need to install it separately, PCDE provides a method using its built in Software Distribution technology.



## Flexible Architecture

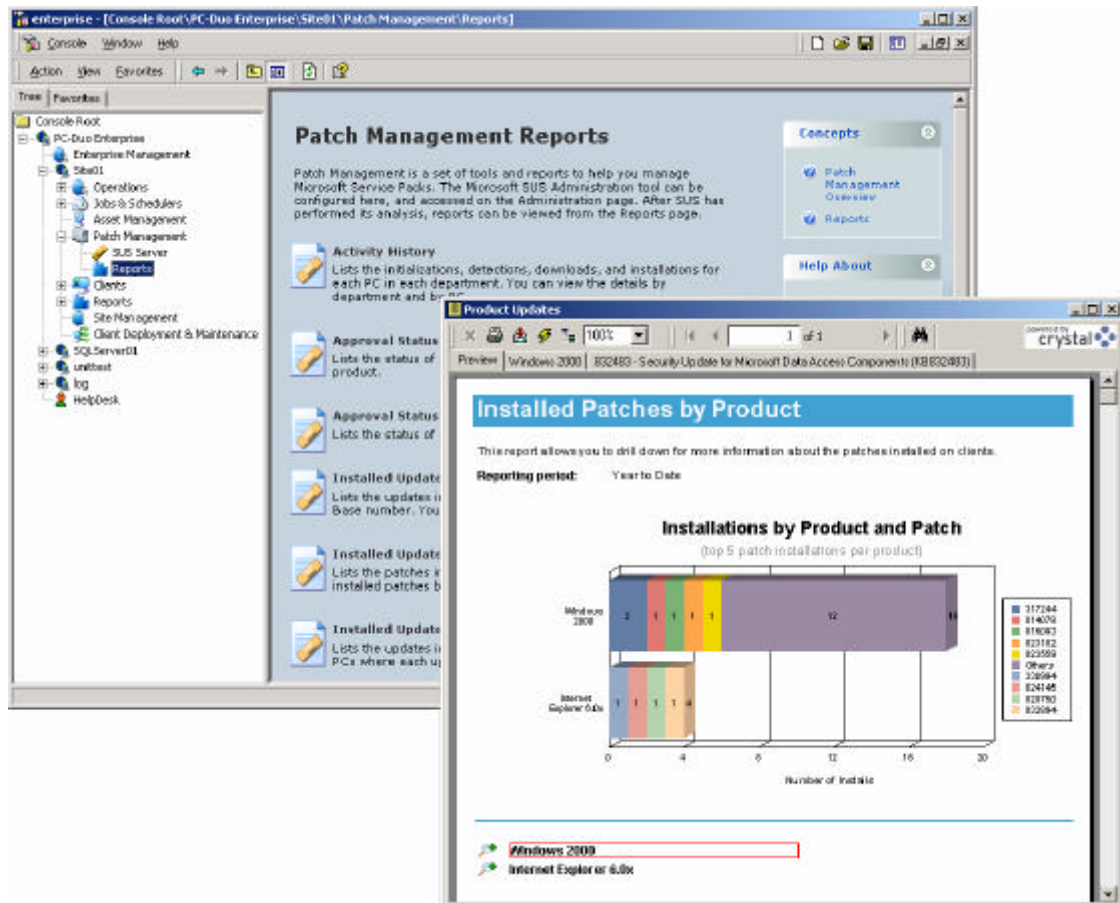


The SUS Server is at the heart of Software Update Services. It enables support staff to view the latest updates and choose which ones they want to make available, and can also act as a repository for the installation kits.

PC-Duo Enterprise enables organizations to specify the details of their Software Updates Services installation irrespective of whether their organization has a single server responsible for storing update kits and installation statistics on the updates installed, or a distributed system with secondary installation and statistics servers.

## Multi-level Access to Data

Patch Management Reports enable users to unlock the detail collected by Software Updates Services and make it readily available to the people that need it. Using the latest enhancements to Crystal Reports version 9, Enterprise provides information on software updates broken down by product and by PC, installation histories, Microsoft Knowledge Base details, and PCs where updates have not yet been made. Structured data presentation gives managers an overview of their network's status and also enables support staff to drill-down and identify update details.



## How to Buy (licensing)

For current maintained customers, PC-Duo's Patch Management technology is available in two options.

**PC-Duo Reports for SUS** - included with PC-Duo Enterprise Inventory.

**PC-Duo Extensions for SUS** - combining Reports for SUS with the tools to deploy and manage the Automatic Updates Client in a non-AD environment – available to licensees of Inventory and Distribution.