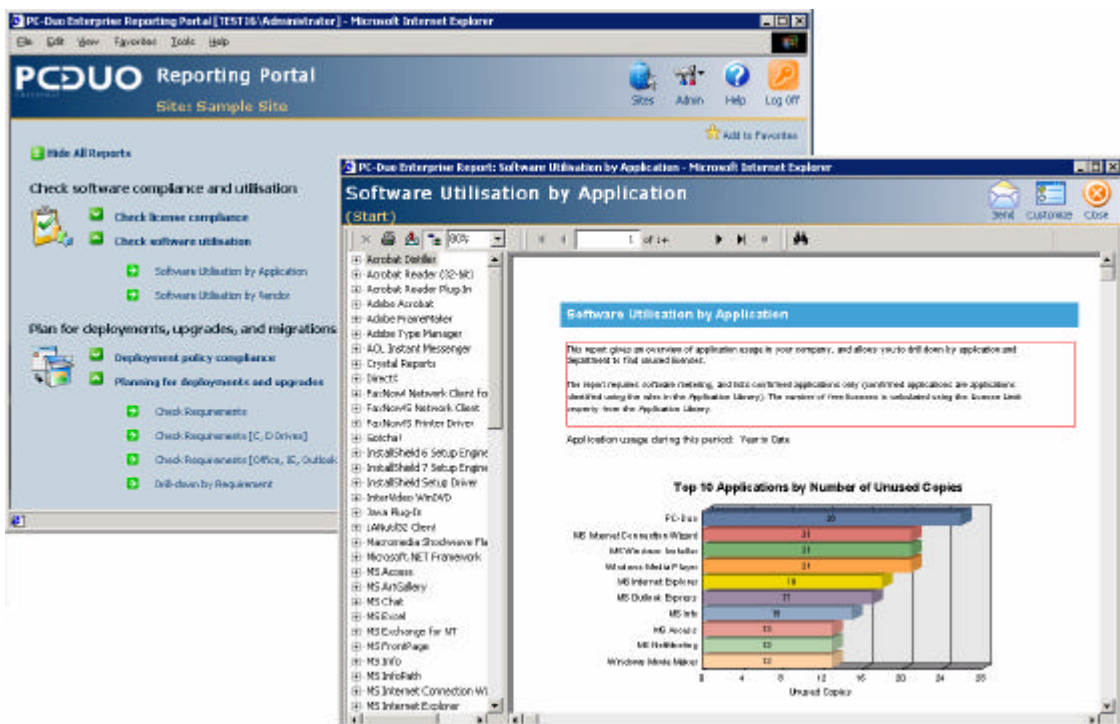




Announcing: PC-Duo Enterprise Web Portal v1.0

Enterprise Portal

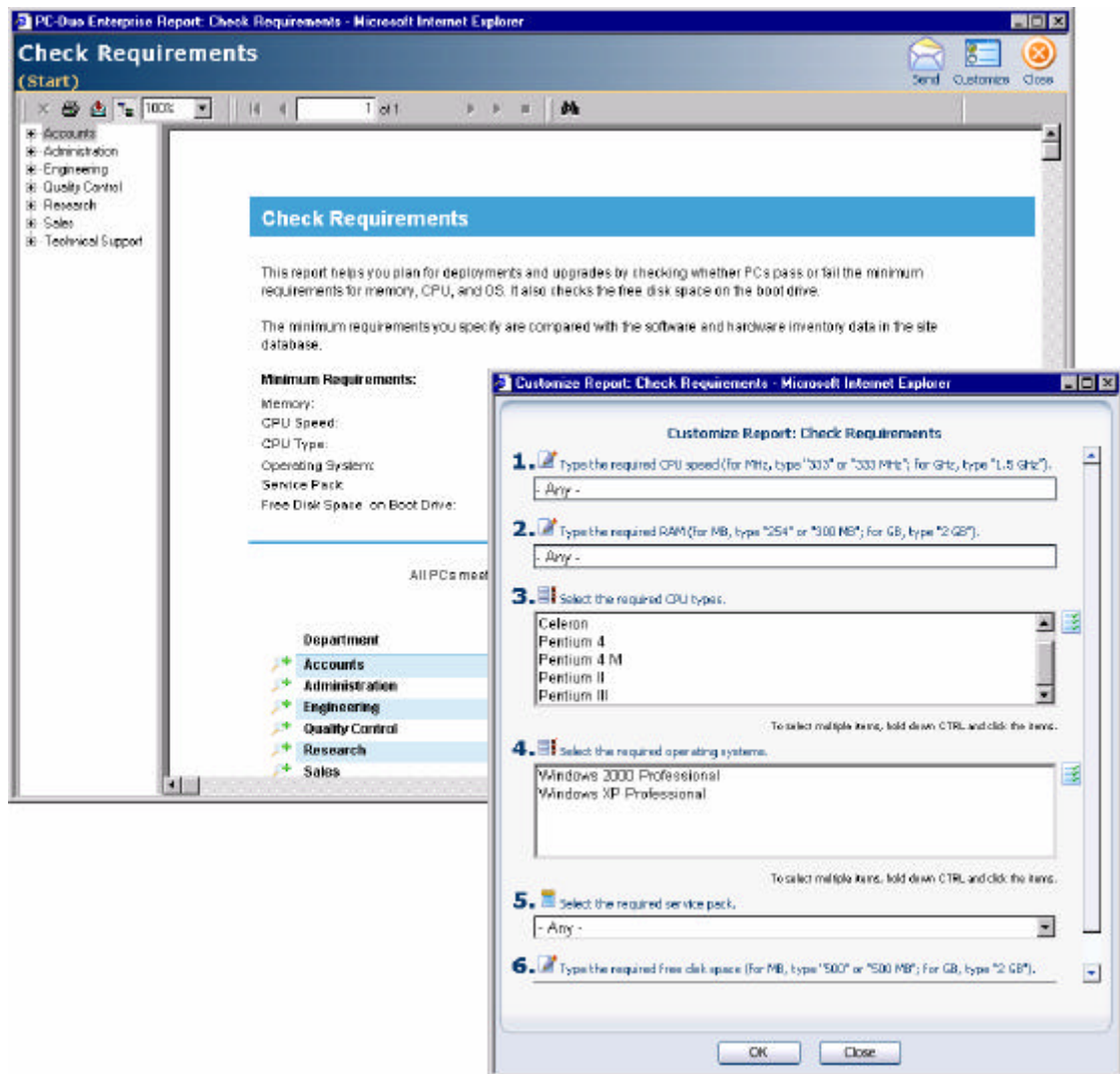
The Enterprise Portal brings web-based organization-wide reporting to PC-Duo Enterprise. Using standard browser technology, it provides authorized users with click-through access to Enterprise data from anywhere within your organization. Its simple-to-use, ergonomically-designed interface enables users to access data with minimum expertise and training.



Reports are divided into a series of themes, which concentrate on specific aspects of IT asset management. For example, they enable users to access information on current and historical system configurations; software utilization and license compliance; and software deployments and migrations.

Customizing Reports

Specially designed interactive reports offer basic analysis capabilities throughout your organization. Each report in the Portal automatically extracts data from the select database, and, users can choose to limit the data to specific periods and other criteria. In addition, users can also choose the level at which the information is presented without the need to learn or use the Enterprise Console.



Mailing Reports

If all the users in your organization do not have intranet access, or if you need to discuss specific aspects of a report with colleagues, you can e-mail the report to other people directly from the Portal in several different formats including Excel, Rich Text Format and Adobe's Portable Document Format.

Extending the Portal

From Q4 2004, Vector Networks will be extending the reports available for the Portal by downloads from the Web. The download URL will be announced at the time.