



What's New in Console and Inventory 2.1

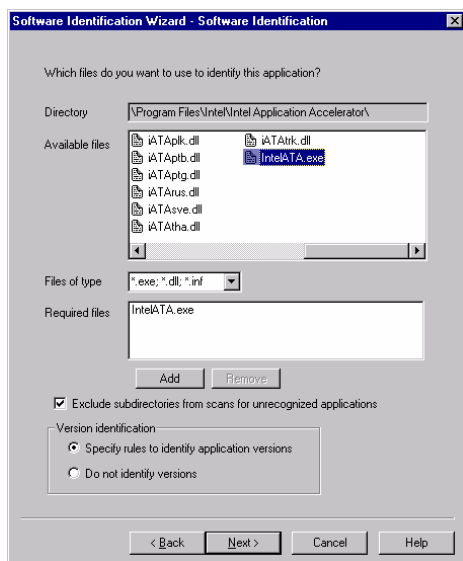
Major software inventory enhancements

Inventory 2.1 now supports file header (VersionInfo) interrogation as well as its rule-based application recognition. This provides automated *provisional recognition* of applications not already defined using the rules in the Applications Library, and at the same time the number of entries in the Unrecognised Software listing is reduced substantially. This dramatically reduces the task of expanding the Applications Library to include the specialised software that Enterprise does not recognise out-of-the-box, and reduces the timescale for the first complete audit.

Browser support for Version Information

Before generating rules with the new Software Identification Wizard, individual instances of an application can be Browsed to reveal which executables contain reliable data on the application version ("VersionInfo"); v2.1 encourages customers to use the VersionInfo data to provide automatic recognition of application versions within a single set of rules.

Filename	Size	Date	Time	Attributes	Version Information
VTL_INF.HTM	1747	06-Oct-99	23:04:08	A	
CFGWIZ.EXE	188480	22-Jul-02	12:05:04	A	Microsoft® FrontPage® 2000 4.0.2.5526 (Microsoft Corporation)
Ip4Arng.dll	94208	22-Jul-02	12:05:04	A	Microsoft® FrontPage® 2000 4.0.2.5526 (Microsoft Corporation)
Ip4Aul.dll	102509	22-Jul-02	12:05:04	A	Microsoft® FrontPage® 2000 4.0.2.5526 (Microsoft Corporation)
Ip4Arus.dll	593376	22-Jul-02	12:05:04	A	Microsoft® FrontPage® 2000 4.0.2.4701 (Microsoft Corporation)
Ip4Arvs.dll	32626	22-Jul-02	12:05:04	A	Microsoft® FrontPage® 2000 4.0.2.5526 (Microsoft Corporation)
FFAWEC.DLL	493369	22-Jul-02	12:05:04	A	Microsoft® FrontPage® 2000 4.0.2.4715 (Microsoft Corporation)
Ip4Awel.dll	872567	16-Aug-02	09:45:26	A	Microsoft® FrontPage® 2000 4.0.2.6513 (Microsoft Corporation)
FFENCODE.DLL	94208	06-Oct-99	23:04:06	A	
FFSEIOLL.DLL	29541	22-Jul-02	12:05:04	A	Microsoft® FrontPage® 2000 4.0.2.5526 (Microsoft Corporation)
FFMMC.DLL	598071	22-Jul-02	12:05:04	A	Microsoft® FrontPage® 2000 4.0.2.5526 (Microsoft Corporation)
FFMMC.MSC	4608	06-Oct-99	23:04:06	A	
FFREMADM.EXE	20539	22-Jul-02	12:05:04	A	Microsoft® FrontPage® 2000 4.0.2.5526 (Microsoft Corporation)
FFSRVADM.EXE	28728	22-Jul-02	12:05:04	A	Microsoft® FrontPage® 2000 4.0.2.5526 (Microsoft Corporation)
HTIMAGE.EXE	16444	22-Jul-02	12:05:04	A	Microsoft® FrontPage® 2000 4.0.2.5526 (Microsoft Corporation)
IMAGE.MAP.EXE	16445	22-Jul-02	12:05:04	A	Microsoft® FrontPage® 2000 4.0.2.5526 (Microsoft Corporation)
POSTINFO.HTM	2500	06-Oct-99	23:04:08	A	
TCPTST.EXE	32827	22-Jul-02	12:05:04	A	Microsoft® FrontPage® 2000 4.0.2.5526 (Microsoft Corporation)



New automated Recognition Wizard

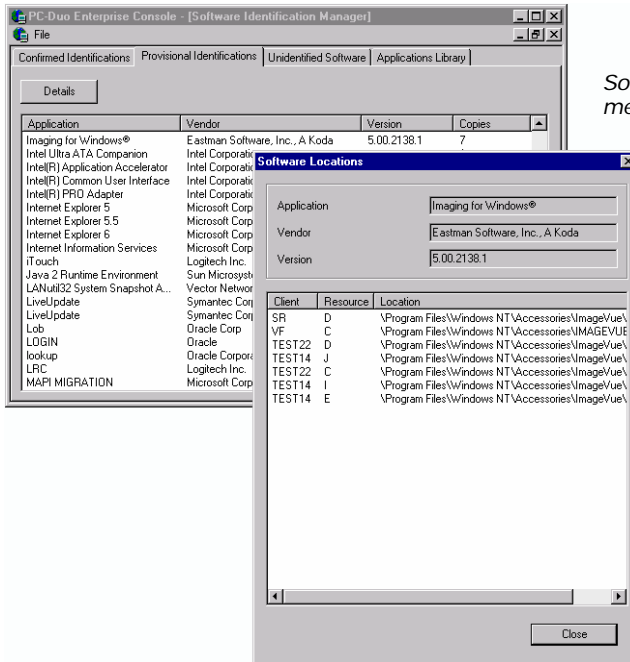
The new Recognition Wizard simplifies the process of converting provisionally recognised applications, and unrecognised software, into recognised applications stored in the Applications Library.

The Wizard generates rules for automated version recognition based on a choice of application file characteristics including VersionInfo data.

<< *Software Identification Wizard simplifies application recognition process*

New Software Identification Manager

All aspects of software inventory and software identification methodology are now brought together in a new Software Identification Manager window. All three classes of inventory result – Confirmed Recognitions, Provisional Recognitions and Unrecognised Software – are accessible in this window, together with the Applications Library (renamed from the Packages Database). As a result, the workflow of converting provisionally recognised applications into entries in the Application Library and resolving entries in the Unrecognised Software list is much more efficient than in previous releases.



Software Identification Manager provides a simplified method to manage different levels of identified software

From the application summary views, use the right click, 'Show Locations' menu option to list the PCs and directories where a particular application is installed.

Other enhancements

Improved CPU speed recognition technology

New technology for CPU speed recognition means that PC-Duo Enterprise is capable of recognising new processors without any refresh of software or look-up data. It continues to be important to use technology that is not reliant on the level of DMI/WMI support provided by the hardware manufacturer.

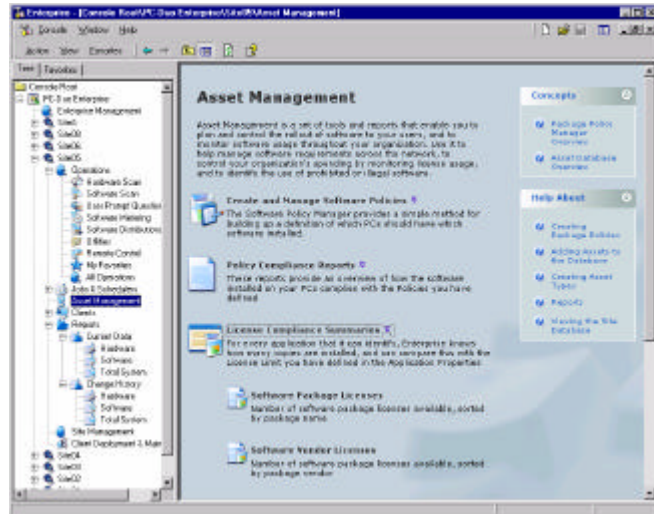
General Console enhancements

Dynamic Groups - workflow in defining Dynamic Groups has been improved with Natural Language Queries being saved as part of the Group definition and SQL Select statements transferred automatically from the SQL Wizard to the Dynamic Group definition.

Asset Management view

The Asset Management page has been reorganised with sets of operations logically grouped and presented in a way that should help new evaluators see much more easily the functionality that is available.

Asset Management reorganised to help plan and control the rollout of software, monitor usage and manage software compliance >>



Rapid Rule Creation

As an alternative to using the flexibility of the new Software Identification Wizard, Rapid Rule Creation allows you to automatically convert a provisional identification to an entry in the Applications Library, using the same files and VersionInfo file header data that Enterprise used to make the provisional identification.

Note: If the provisional identification process was not able to find suitable file header data for the version number, then Rapid Rule Creation is not available.

Multi-Language Support

To support worldwide demand for PC-Duo Enterprise, v2.1 of the Console, Inventory, Metering and Distribution modules (host and client) is being made in French, German and Spanish. Translation will include full software version, excluding documentation and help. (Dates TBA)

Infrastructure improvements and bug fixes

Since the v2.02 release, installations of PC-Duo Enterprise have continued to grow in size, and with widely varying LAN/WAN network configurations. We have reacted in v2.1 with improvements in resilience of communications between Enterprise components, and resilience to PCs being moved, renamed or replaced.