

What's New in Census 8.2

E-mail Signatures

An e-mail signature consists of text that is automatically added to the end of all outgoing e-mail messages.

Each user can create her own custom signature, which allows for a more personal communication when working with the end users, while keeping the advantages of having a single e-mail address for Development or Support.

The screenshot shows a configuration window for E-mail Signatures. At the top, there is a checked checkbox labeled "E-mail Signature". Below it, a text box contains the instruction: "Create a personal signature that will be automatically included with new e-mails. Click 'Edit' to create or modify the signature." The main area is a large text box containing the signature text: "Bill Gates", "MicroZoft Corp.", and two hyperlinks: "[http://www.microsoft.com](\"http://www.microsoft.com\")" and "[mailto:wgates@microsoft.com](\"mailto:wgates@microsoft.com\")". To the right of this text box is an "Edit" button. Below the text box, there is a section labeled "Apply to:" with three rows of dropdown menus: "New e-mails" set to "Yes", "Replies" set to "No", and "Forwards" set to "No". At the bottom of the window, a status message reads: "The changes will be applied the next time you send an e-mail."

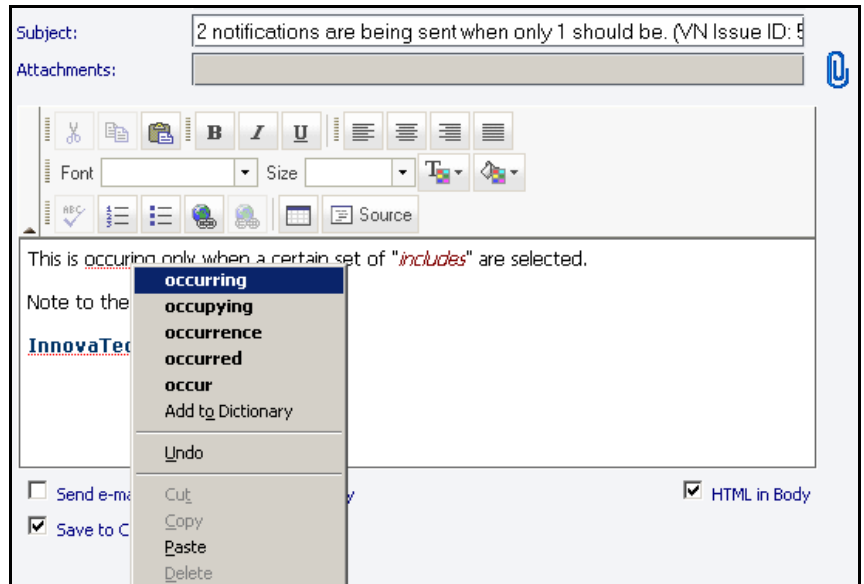
The e-mail signature can be rich in formatting, too. Use the E-mail Signature Editor for changing colors, fonts, adding hyperlinks and images.

Spell-checker in Firefox

Census 8.2 fully supports the spell-checker functionality in Firefox, even for e-mail messages that are in HTML format.

Show/Hide Search in Firefox

Support for showing/hiding the Search area of the Web view in Firefox.

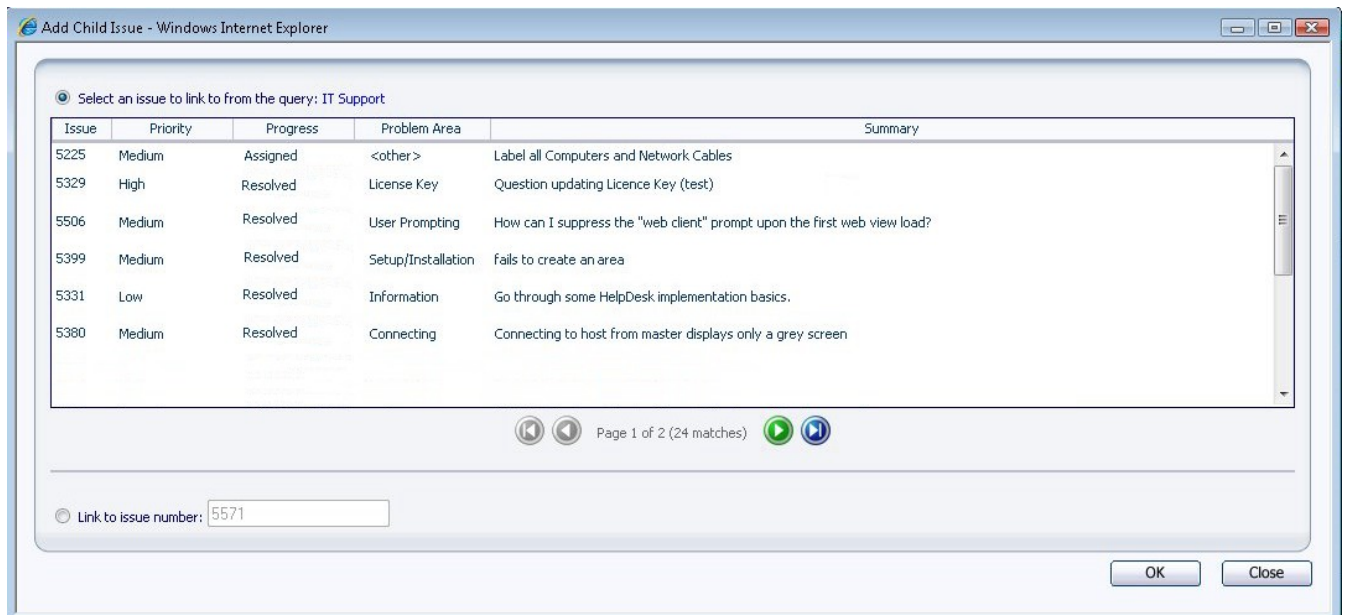


New E-mail Notifications

The Census system can now send automatic e-mail notifications to the owner of a ticket when a non-owner user makes a change to the issue (i.e. updates the ticket).

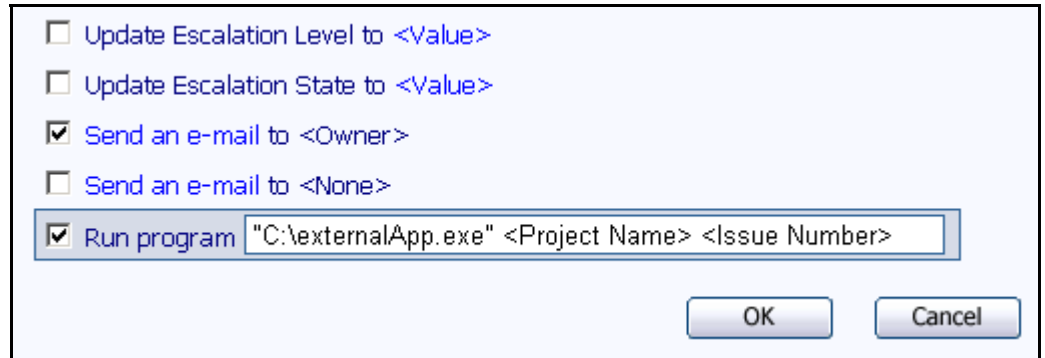
Adding Child Issues

Adding child issues is now easier with the enhanced dialog that uses a summary-list type of selection where the user can run a query and view additional details before adding the link.



E-mail/SLA 'Run Program' actions

Improved support for command line arguments in E-mail/SLA 'Run Program' actions. Census 8.2 now supports multiple arguments and macros. For example:
"C:\Program Files\Common Files\externalApp.exe" <Project Name> <Issue Number>.



License Management

Enhanced license management of the Census sessions with the ability to reuse previous floating-licenses.

Improved Performance for Web views

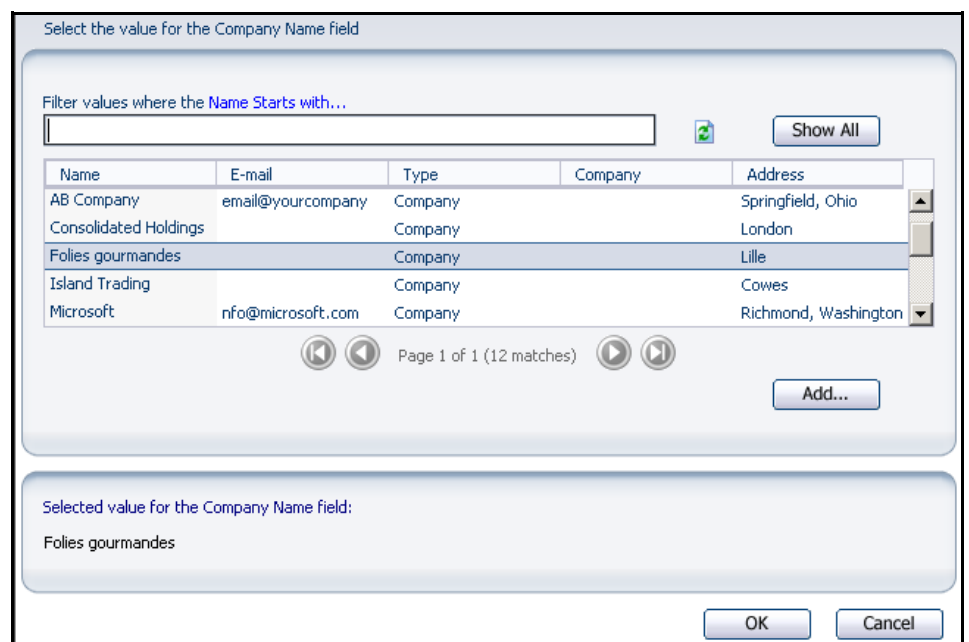
Improved performance when using regular Web views, especially with projects that have many issues and choice lists with many possible values.

New optional Single-choice and Multi-choice list

Single-choice and multi-choice fields have now the option to display the list of possible values or choices in a dialog that supports searching and paging, which significantly benefits fields that have many choices.

More Languages

Enhanced support for non-English languages, especially in Web views, E-mail Integration and E-mail Notifications.



Name	E-mail	Type	Company	Address
AB Company	email@yourcompany	Company		Springfield, Ohio
Consolidated Holdings		Company		London
Folies gourmandes		Company		Lille
Island Trading		Company		Cowes
Microsoft	nfo@microsoft.com	Company		Richmond, Washington

Issues Solved

- All issues fixed by previous patches of Census 8.2 are included.
- Random COM+ errors logged and Web browser freezes.
- Performance improvement - Corrected performance flaw when saving. This specifically occurs when the update field is a single-choice field that has a choice list containing many values.
- Firefox changes CRLF's into newline characters in memo fields.
- Saving an issue takes longer in some cases due to a long activity log.
- Error associated to the Mail Sender Service may be logged in the Windows Application Log: "Optimistic concurrency check failed. The row was modified outside of this cursor."
- The Census Authentication process sometimes fails to get an IP address when attempting to connect to an Active Directory or LDAP server.
- Various fixes related attachment files occasionally being saved in unexpected locations or paths. These affect both issue attachments and email attachments. A new Census Admin Integrity Task has been added to verify the integrity of the location of the issue attachments, and repair if necessary.
- The default session timeout has been increased in the Web Admin (the default is 240 minutes).
- Fixed bug where certain macros would not get resolved properly when sent by the integration service through an e-mail integration rule.
- Random Closure Date and Time being updated when the State of the issue has not changed.